

14<sup>th</sup> Meeting of the Permanent Committee on  
GIS Infrastructure for Asia & the Pacific  
(PCGIAP),  
Kuala Lumpur, 19-22 August 2008



# Land Administration Trends and Issues in New Zealand

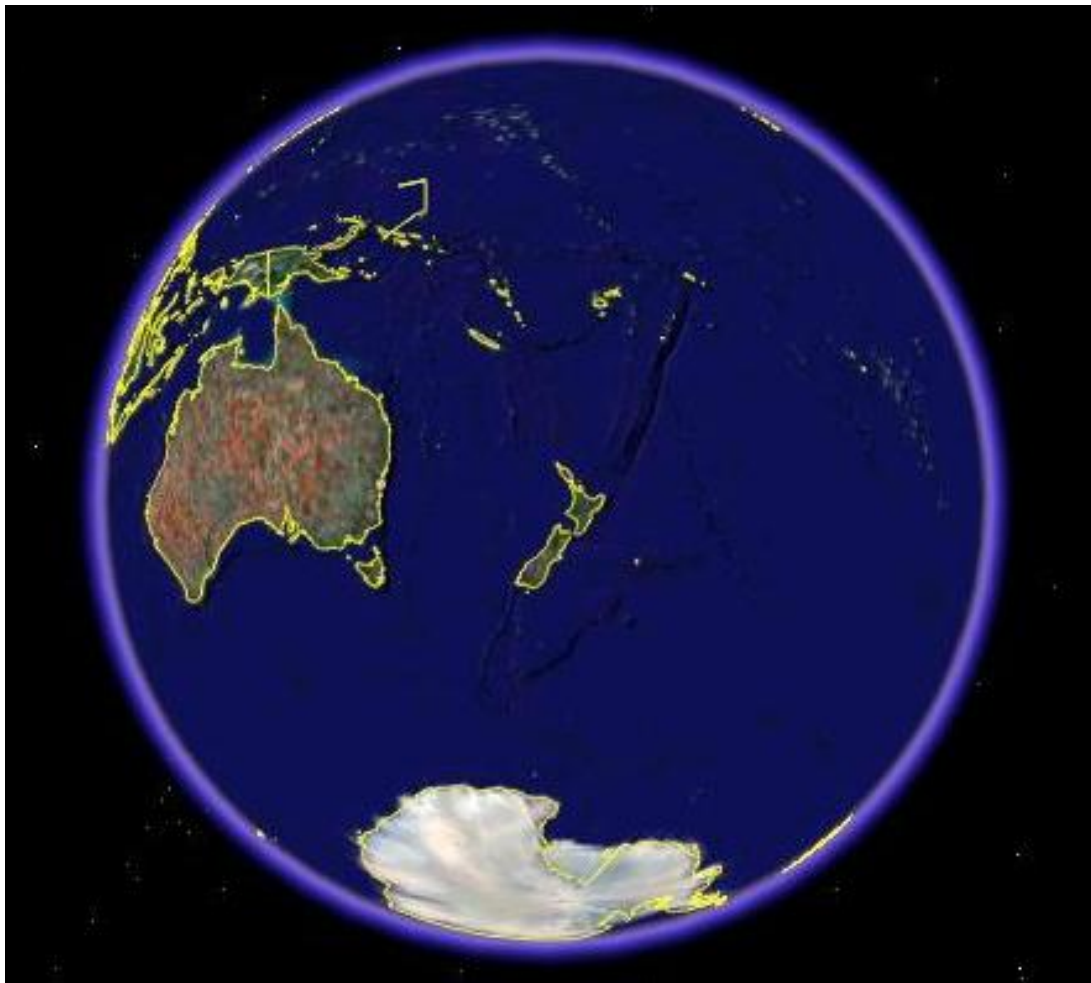
Geoff O'Malley  
Senior Analyst  
New Zealand Geospatial Office  
Land Information New Zealand

# Presentation structure



- Background on New Zealand
- NZ Geospatial Strategy
- Electronic Cadastral survey & land title system (Landonline) – 100% e-lodgement
- Crown Pastoral Leases: Tenure Review
- Maori land title registration project
- NZ Continental Shelf

# New Zealand in the world



# Background on New Zealand



- 4.2 million people
- 270,000 sq kms land area
- Ethnic mix – 68% European, 15% Maori, 9% Asian, 7% Pacific Islanders, 1% other
- Parliamentary elections every 3 years
- 2 official languages – English and Maori
- First Maori (indigenous people) in NZ – 700 years ago approx, first European explorers - 1642 & 1769
- New Zealand economy – agricultural exports, tourism
- One third of NZ – protected conservation areas

# New Zealand Geospatial Strategy: Vision

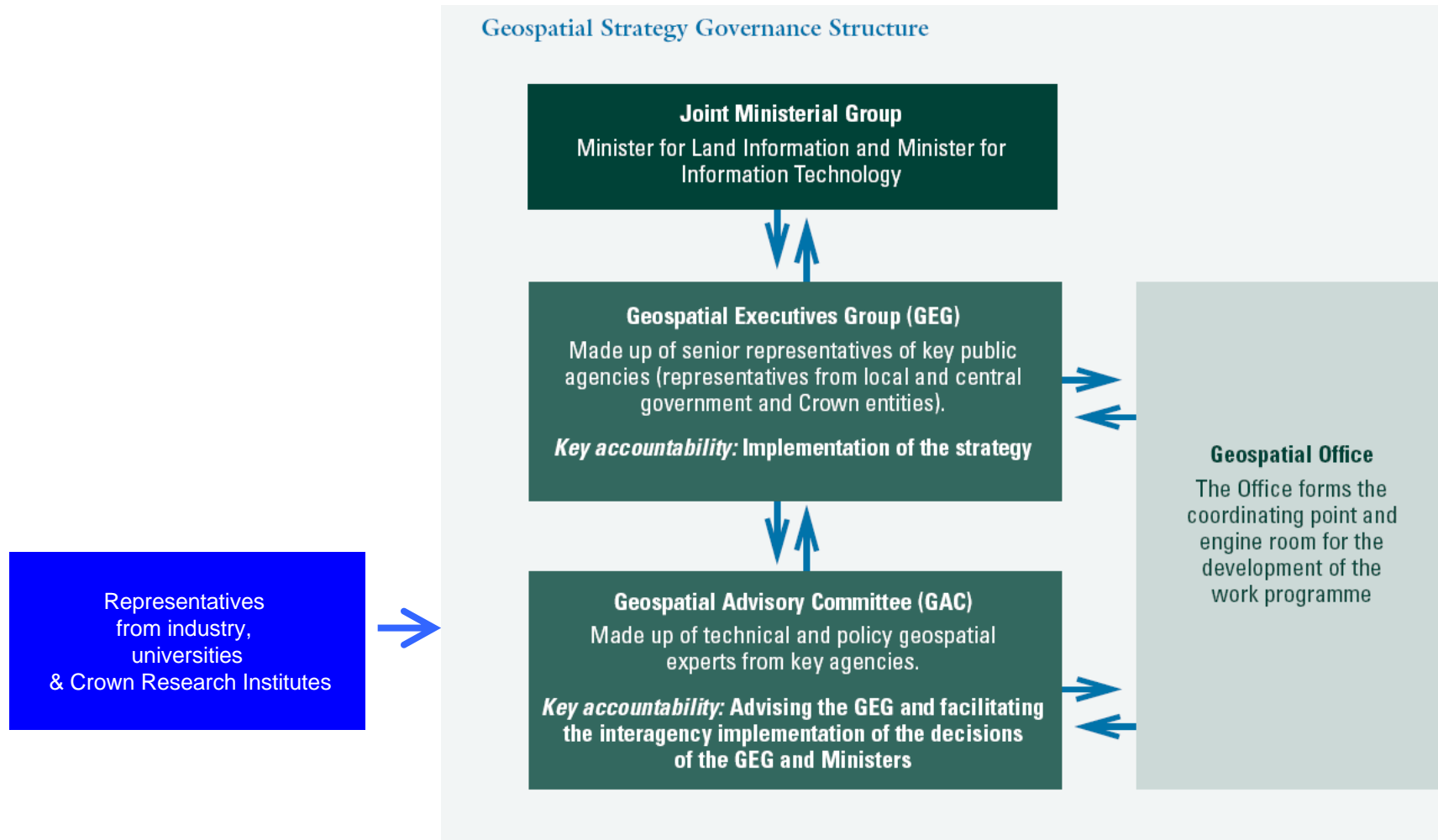


- Trusted geospatial information that is available,  
accessible, able to be shared and used to support the:
- safety and security of New Zealand
  - growth of an inclusive, innovative economy; and
  - preservation and enhancement of our society, culture and environment

# New Zealand Geospatial Strategy Governance Structure



## Geospatial Strategy Governance Structure



# Electronic cadastral survey & land title system (Landonline)



- Landonline – online service to search and lodge land title dealings and survey data
- surveyors, lawyers and other land professionals (including Territorial Authorities)
- began 2000 with e-lodgement since 2003
- mandatory 100% e-lodgement: cadastral survey transactions September 2007 & land titles transactions February 2009
- training and close stakeholder involvement critical for success

# NZ companies with links to land administration work in Asia-Pacific

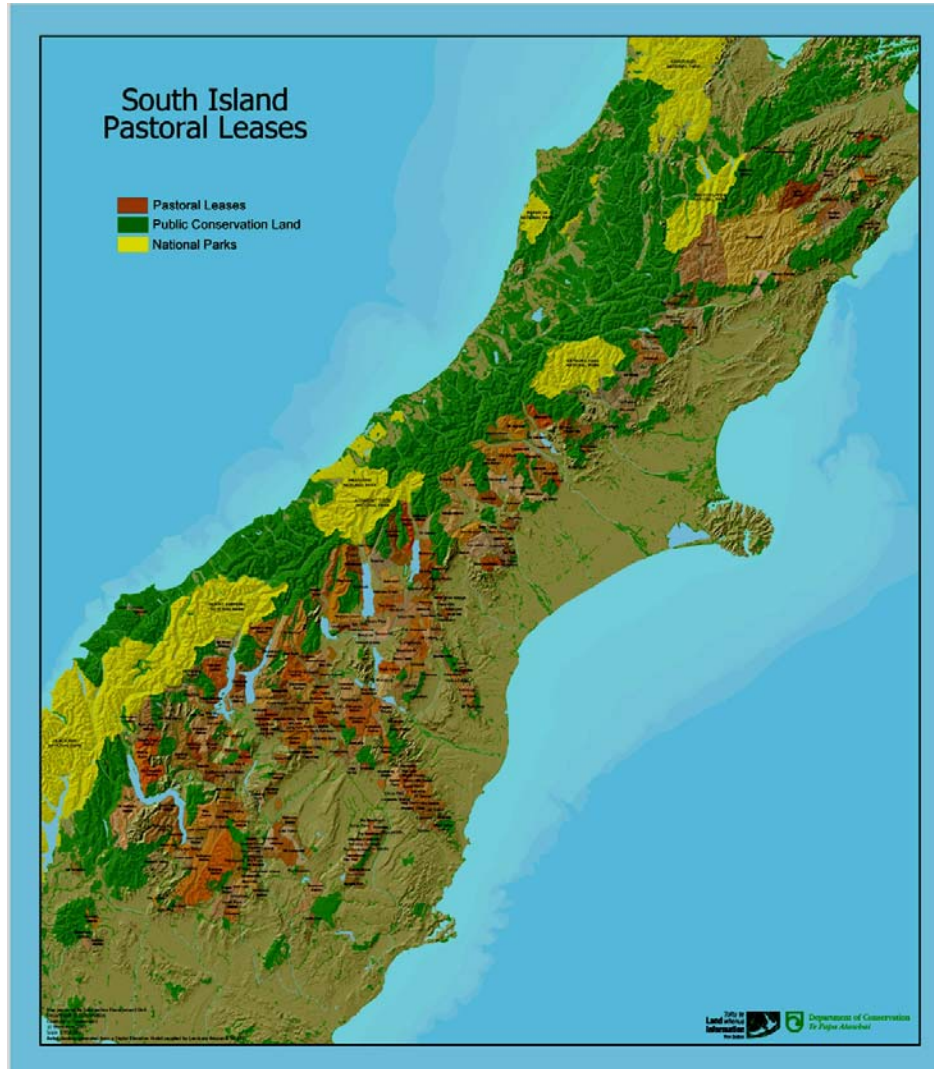


- LandZone [www.landzone.com](http://www.landzone.com)
- Terralink International [www.terralink.co.nz](http://www.terralink.co.nz)
- Explorer Graphics [www.egl.co.nz](http://www.egl.co.nz)
- Cadastre Limited [www.cadastre.co.nz](http://www.cadastre.co.nz)
- NZ Aerial Mapping [www.nzam.com](http://www.nzam.com)
- University of Otago seminar - investigating the potential of using free/libre open source software (FLOSS) to support digital cadastre and land registration (Dunedin, NZ – May 2008) [http://source.otago.ac.nz/osca/FAO\\_Seminar](http://source.otago.ac.nz/osca/FAO_Seminar)

# Crown Pastoral Leases: Tenure Review



# Crown Pastoral Leases: Tenure Review



# Crown Pastoral Leases: Tenure Review



- Voluntary negotiation between the Crown and a pastoral lessee
- Transfer of land with significant values (biodiversity, landscape, recreation, historic, public access, etc) to Department of Conservation
- Freeholding of land capable of productive use to the lessee
- Lakeside landscapes protected from inappropriate development

# Maori land title registration project



- Maori Land Court maintains ownership records (approx 7% of NZ land area)
- 5 year government funded project to register 57,000 Maori freehold land titles and issue certificates of title
- Cadastral surveys give spatial view of partition boundaries
- Benefit of guarantee of title under the Land Transfer Act 1952
- Maori land titles (without registration under Land Transfer Act 1952) viewed by finance lending agencies as having low security for land development loans

# NZ Continental Shelf

- NZ's continental shelf boundaries submitted to the UN Commission on Limits of the Continental Shelf
- Up to 24 times existing land area
- NZ Geographic Board will coordinate official undersea feature naming within continental shelf area
- concept of mineral exploration rights more relevant than private property rights



# More information



- [www.geospatial.govt.nz](http://www.geospatial.govt.nz)
- [www.linz.govt.nz](http://www.linz.govt.nz)
- [www.landonline.govt.nz](http://www.landonline.govt.nz)
- [gomalley@linz.govt.nz](mailto:gomalley@linz.govt.nz)